

Outer Dowsing Offshore Wind

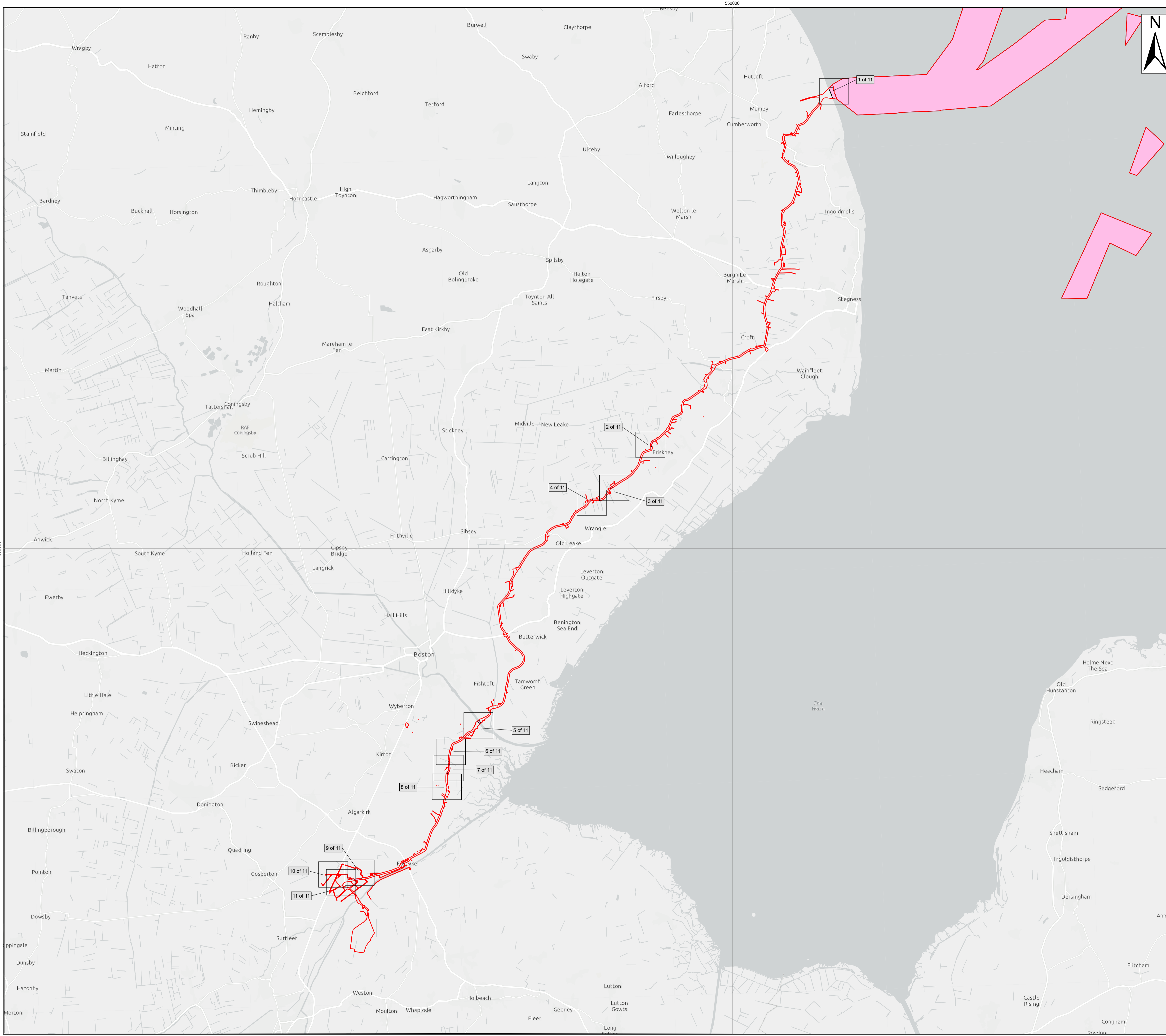
Plans

2.6 Crown Land Plans Onshore

Date: March 2024

Document Reference: 2.6
Pursuant to APFP Regulation: 5(2)(n)
Rev: 1.0

Company:	Outer Dowsing Offshore Wind	Asset:	Whole Asset			
Project:	Whole Wind Farm	Sub Project/Package:	Whole Asset			
Document Title or Description:	2.6 Crown Land Plans Onshore					
Internal Document Number:	PP1-ODOW-DEV-CS-PLN-0016	3 rd Party Doc No (If applicable):	N/A			
Outer Dowsing Offshore Wind accepts no liability for the accuracy or completeness of the information in this document nor for any loss or damage arising from the use of such information.						
Rev No.	Date	Status / Reason for Issue	Author	Checked by	Reviewed by	Approved by
1.0	March 2024	DCO Application	Dalcour Maclaren	Shepherd and Wedderburn	Outer Dowsing	Outer Dowsing



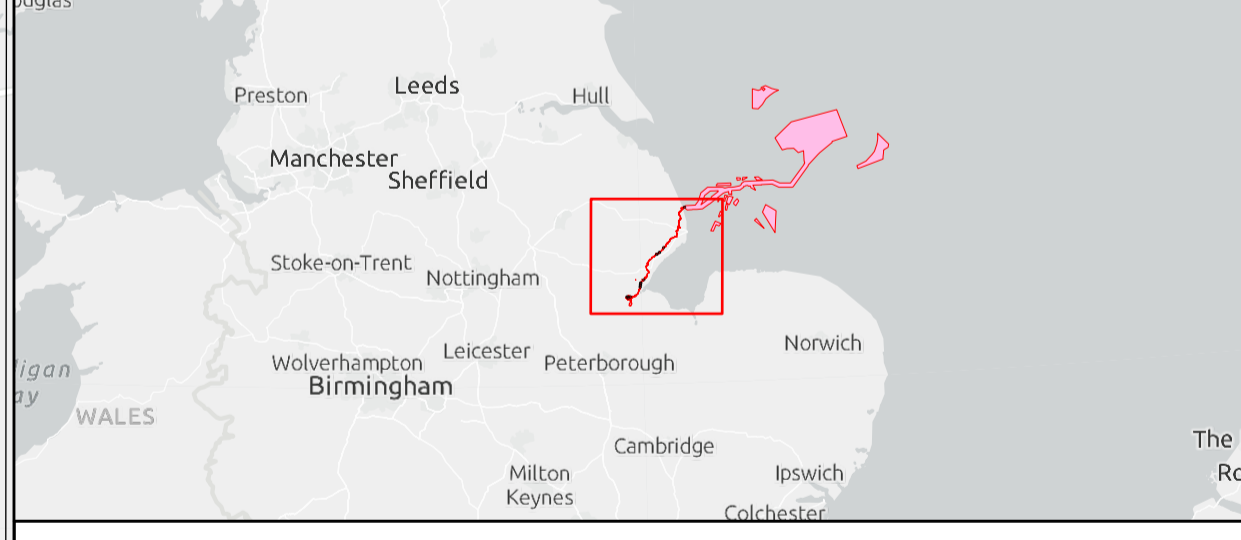
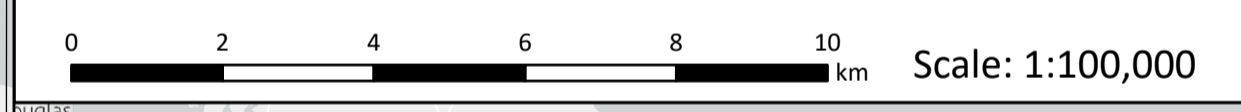
Legend

- Order Limits
- The King's Most Excellent Majesty In Right Of His Crown

Source:
 Contains Esri Community Maps Contributors, Esri UK, Esri, TomTom, Garmin, Foursquare, GeoTechnologies, Inc, METI/NASA, USGS, Esri UK, Esri, TomTom, Garmin, Foursquare, GeoTechnologies, Inc, METI/NASA, USGS, Esri UK, Esri, TomTom, Garmin, FAO, NOAA, USGS.
 Based upon the Ordnance Survey Map with the sanction of the controller of HM Stationery Office. Crown Copyright Reserved. © OS Licence No. 0100031673

Notes:	Status:
	Application Issue

Onshore Coordinate System
 Datum: OSGB 1936
 Spheroid: Airy 1830
 Projection: British National Grid
 Central Meridian: 2 W
 Vertical Reference: Newlyn



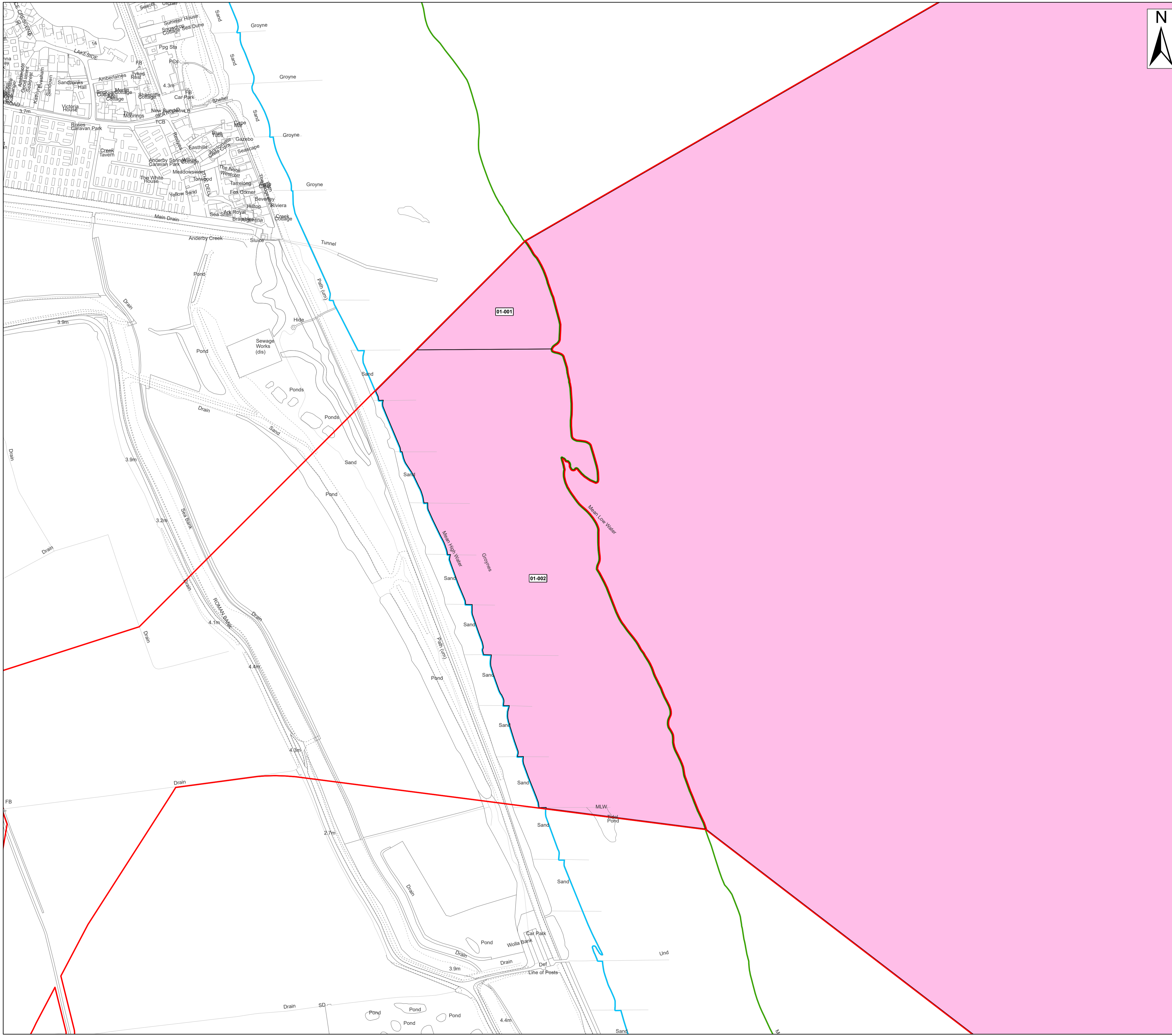
Outer Dowsing Offshore Wind 2.6 Crown Land Plans Onshore DCO Application

Drawing No: PP1-ODOW-DEV-CS-MAP-0006

Drawing: Overview Sheet			Page Size: A1		
Rev No:	Date	Description	Drawn	Checked	Approved
1.0	March 2024	DCO Application Version	RT	DM/ODOW	ODOW



This document may only be used for the purpose for which it was commissioned and in accordance with the terms of engagement for that commission. Unauthorised use of this document in any form whatsoever is prohibited.

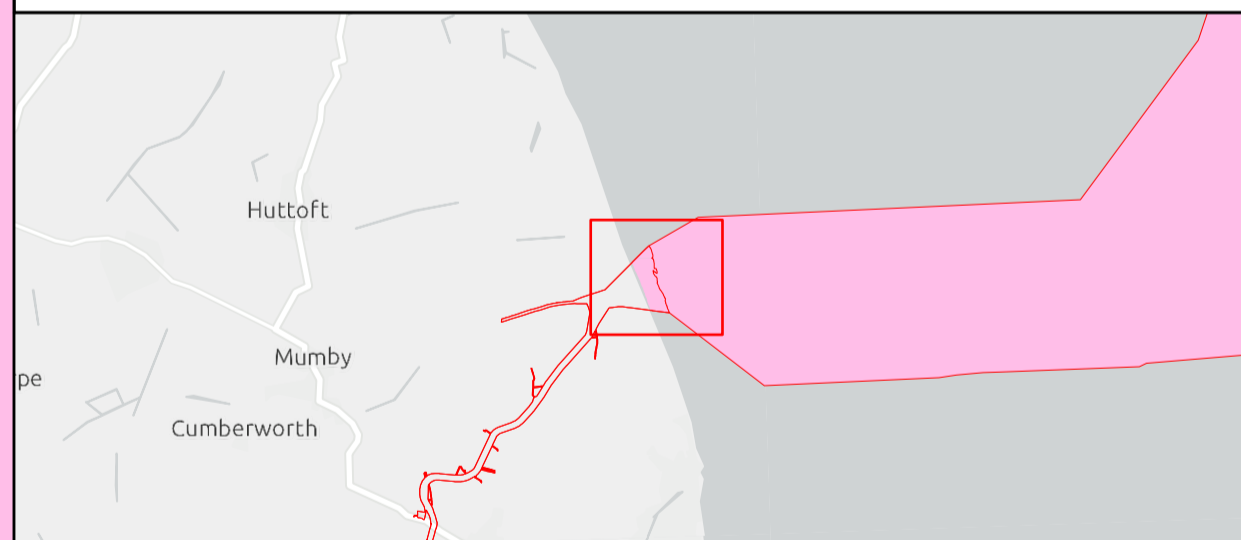
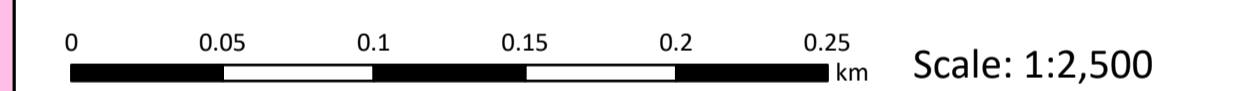


- Legend**
- Order Limits
 - The King's Most Excellent Majesty In Right Of His Crown
 - Mean High Water (Springs)
 - Mean Low Water (Springs)

Source:
 Contains Esri Community Maps Contributors, Esri UK, Esri, TomTom, Garmin, Foursquare, GeoTechnologies, Inc, METI/NASA, USGS, Esri UK, Esri, TomTom, Garmin, Foursquare, GeoTechnologies, Inc, METI/NASA, USGS.
 Based upon the Ordnance Survey Map with the sanction of the controller of HM Stationery Office. Crown Copyright Reserved. © OS Licence No. 0100031673

Notes:	Status:
	Application Issue

Onshore Coordinate System
 Datum: OSGB 1936
 Spheroid: Airy 1830
 Projection: British National Grid
 Central Meridian: 2 W
 Vertical Reference: Newlyn



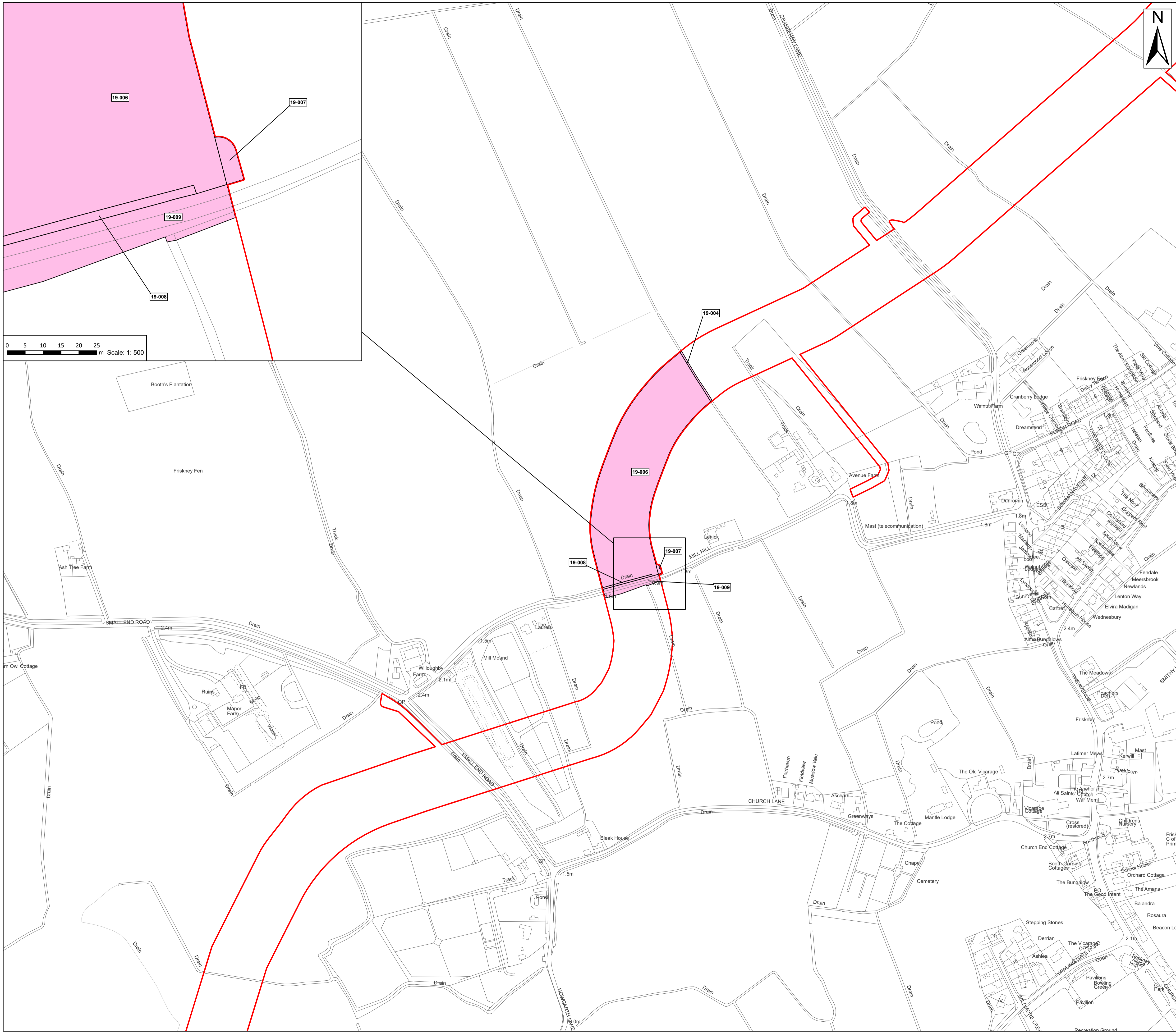
Outer Dowsing Offshore Wind 2.6 Crown Land Plans Onshore DCO Application

Drawing No: PP1-ODOW-DEV-CS-MAP-0006

Drawing: 1 of 11			Page Size: A1		
Rev No:	Date	Description	Drawn	Checked	Approved
1.0	March 2024	DCO Application Version	RT	DM/ODOW	ODOW



This document may only be used for the purpose for which it was commissioned and in accordance with the terms of engagement for that commission. Unauthorised use of this document in any form whatsoever is prohibited.



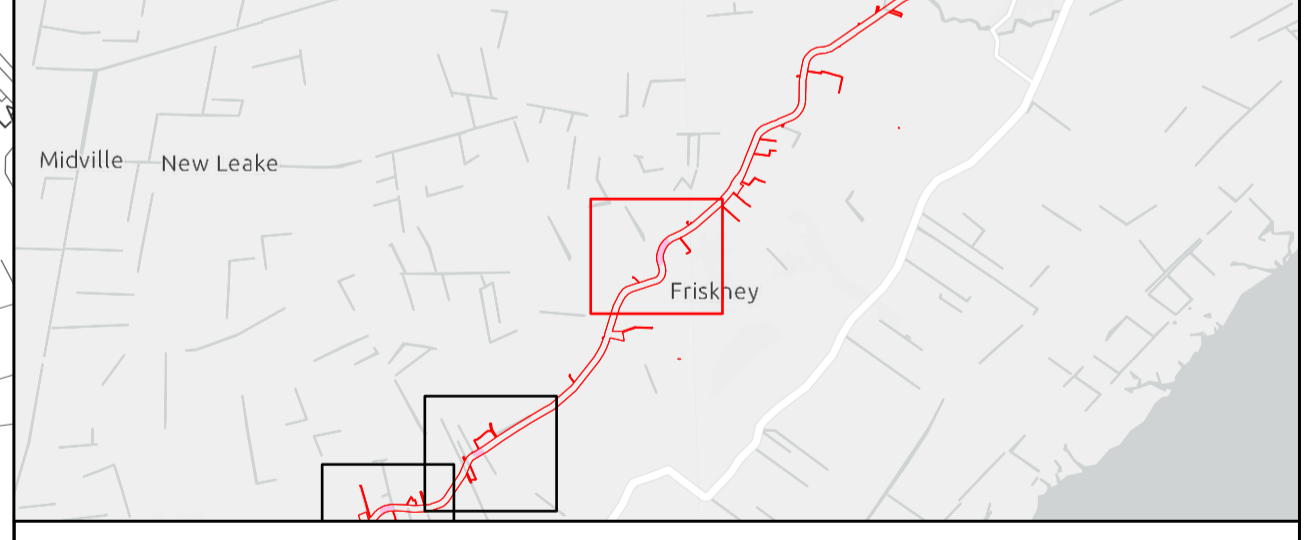
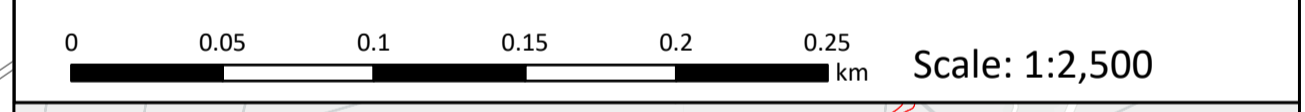
Legend

- Order Limits
- The King's Most Excellent Majesty In Right Of His Crown

Source:
 Contains Esri Community Maps Contributors, Esri UK, Esri, TomTom, Garmin, Foursquare, GeoTechnologies, Inc, METI/NASA, USGS, Esri UK, Esri, TomTom, Garmin, Foursquare, GeoTechnologies, Inc, METI/NASA, USGS.
 Based upon the Ordnance Survey Map with the sanction of the controller of HM Stationery Office. Crown Copyright Reserved. © OS Licence No. 0100031673

Notes:	Status:
	Application Issue

Onshore Coordinate System
 Datum: OSGB 1936
 Spheroid: Airy 1830
 Projection: British National Grid
 Central Meridian: 2 W
 Vertical Reference: Newlyn



Outer Dowsing Offshore Wind 2.6 Crown Land Plans Onshore DCO Application

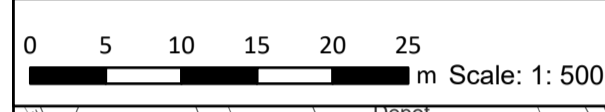
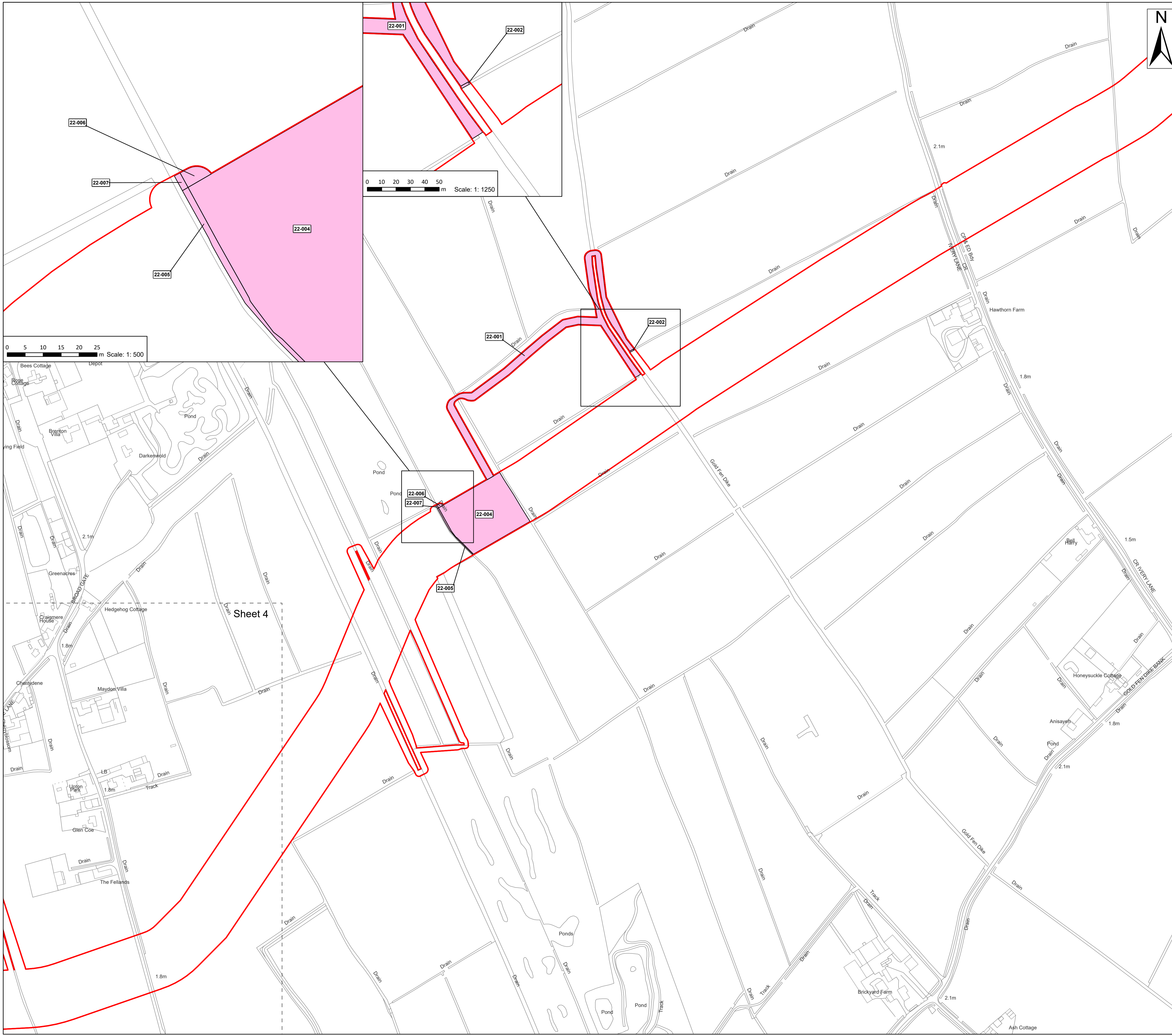
Drawing No: PP1-ODOW-DEV-CS-MAP-0006

Drawing: 2 of 11 Page Size: A1

Rev No:	Date	Description	Drawn	Checked	Approved
1.0	March 2024	DCO Application Version	RT	DM/ODOW	ODOW



This document may only be used for the purpose for which it was commissioned and in accordance with the terms of engagement for that commission. Unauthorised use of this document in any form whatsoever is prohibited.



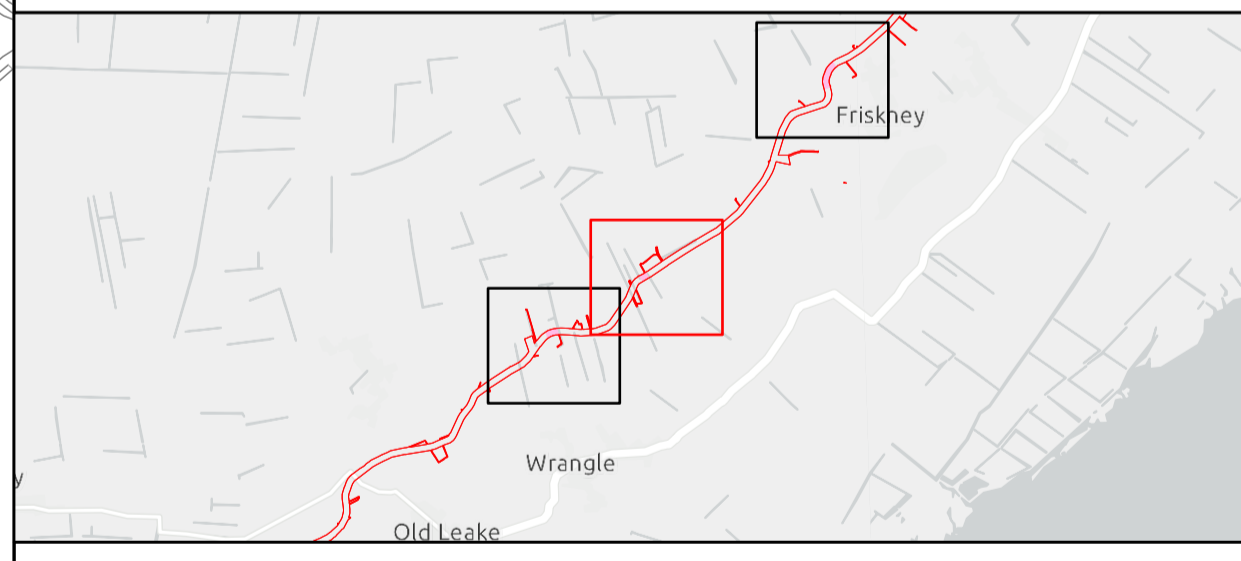
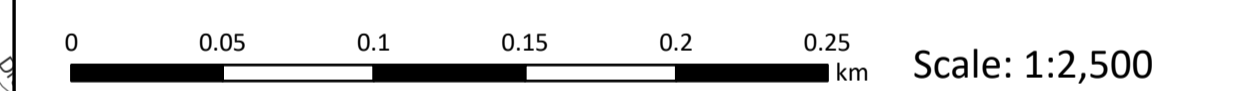
Legend
 Order Limits
 The King's Most Excellent Majesty In Right Of His Crown

Source:
 Contains Esri Community Maps Contributors, Esri UK, Esri, TomTom, Garmin, Foursquare, GeoTechnologies, Inc, METI/NASA, USGS, Esri UK, Esri, TomTom, Garmin, Foursquare, GeoTechnologies, Inc, METI/NASA, USGS.
 Based upon the Ordnance Survey Map with the sanction of the controller of HM Stationery Office. Crown Copyright Reserved. © OS Licence No. 0100031673

Notes:

Status:
Application Issue

Onshore Coordinate System
 Datum: OSGB 1936
 Spheroid: Airy 1830
 Projection: British National Grid
 Central Meridian: 2 W
 Vertical Reference: Newlyn



Outer Dowsing Offshore Wind 2.6 Crown Land Plans Onshore DCO Application

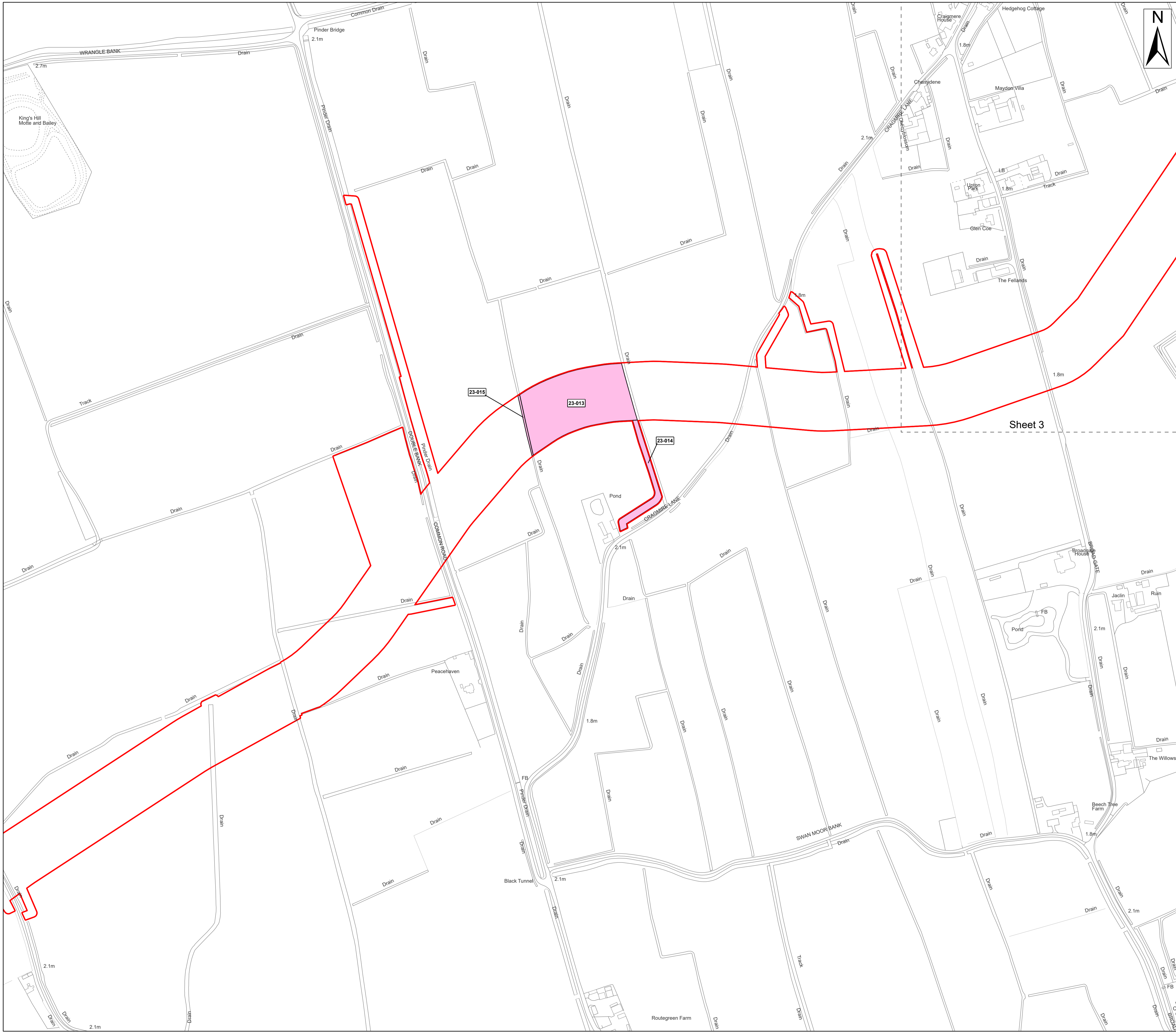
Drawing No: PP1-ODOW-DEV-CS-MAP-0006

Drawing: 3 of 11 Page Size: A1

Rev No:	Date	Description	Drawn	Checked	Approved
1.0	March 2024	DCO Application Version	RT	DM/ODOW	ODOW



This document may only be used for the purpose for which it was commissioned and in accordance with the terms of engagement for that commission. Unauthorised use of this document in any form whatsoever is prohibited.

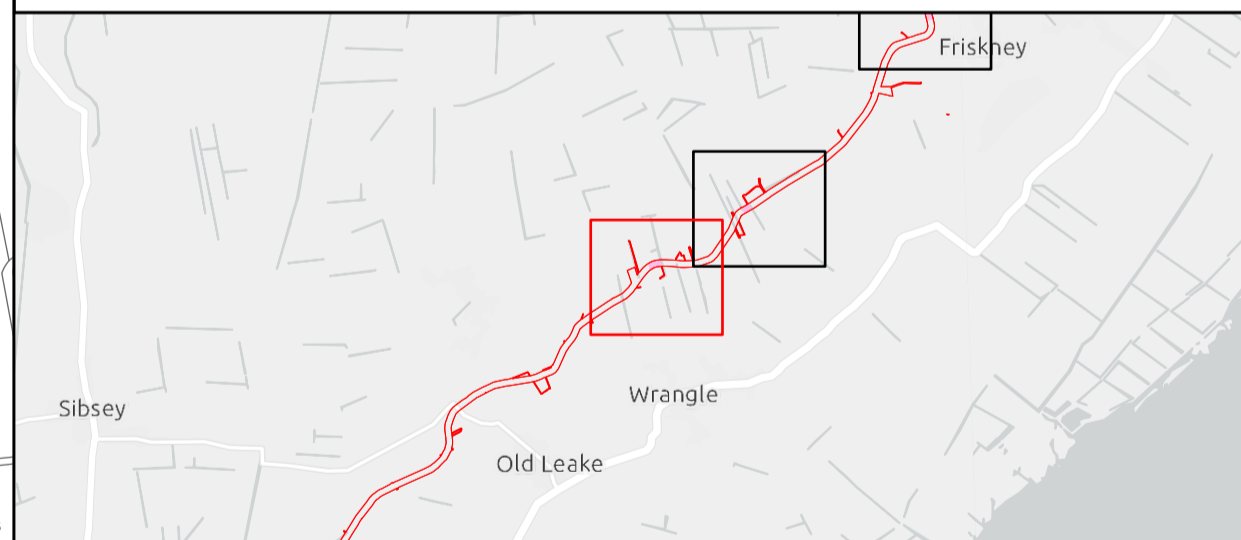
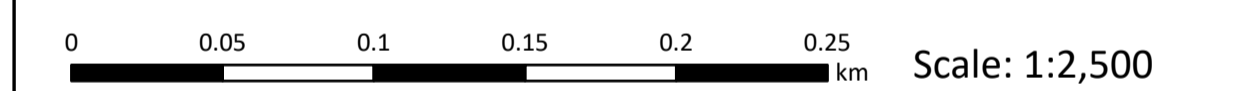


- Legend**
- Order Limits
 - The King's Most Excellent Majesty In Right Of His Crown

Source:
 Contains Esri Community Maps Contributors, Esri UK, Esri, TomTom, Garmin, Foursquare, GeoTechnologies, Inc, METI/NASA, USGS, Esri UK, Esri, TomTom, Garmin, Foursquare, GeoTechnologies, Inc, METI/NASA, USGS.
 Based upon the Ordnance Survey Map with the sanction of the controller of HM Stationery Office. Crown Copyright Reserved. © OS Licence No. 0100031673

Notes:	Status:
	Application Issue

Onshore Coordinate System
 Datum: OSGB 1936
 Spheroid: Airy 1830
 Projection: British National Grid
 Central Meridian: 2 W
 Vertical Reference: Newlyn



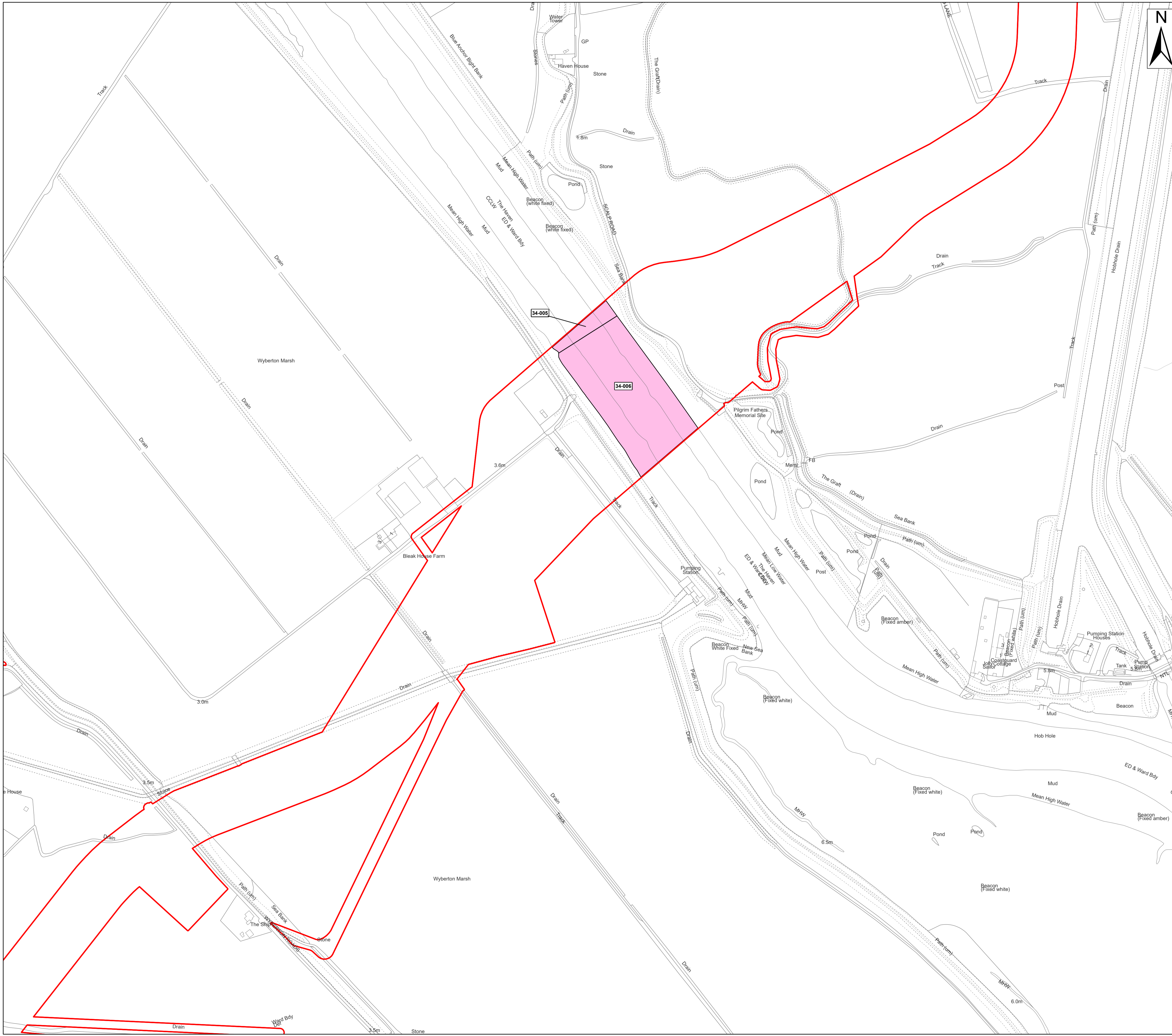
Outer Dowsing Offshore Wind 2.6 Crown Land Plans Onshore DCO Application

Drawing No: PP1-ODOW-DEV-CS-MAP-0006

Drawing: 4 of 11			Page Size: A1		
Rev No:	Date	Description	Drawn	Checked	Approved
1.0	March 2024	DCO Application Version	RT	DM/ODOW	ODOW



This document may only be used for the purpose for which it was commissioned and in accordance with the terms of engagement for that commission. Unauthorised use of this document in any form whatsoever is prohibited.

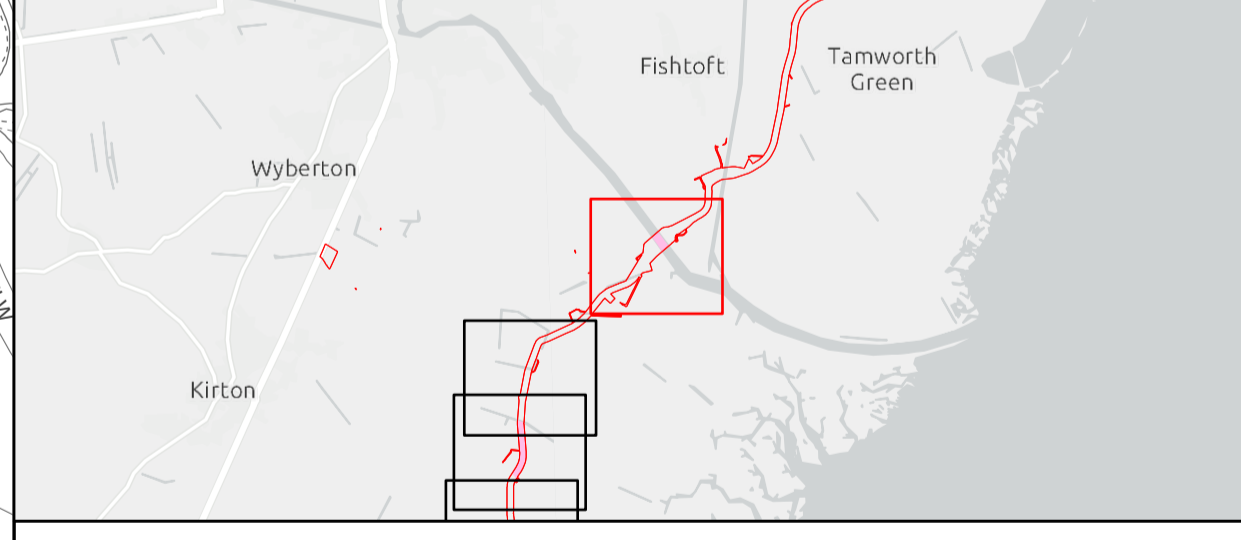
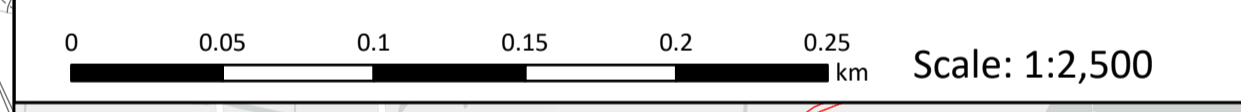


- Legend**
- Order Limits
 - The King's Most Excellent Majesty In Right Of His Crown

Source:
 Contains Esri Community Maps Contributors, Esri UK, Esri, TomTom, Garmin, Foursquare, GeoTechnologies, Inc, METI/NASA, USGS, Esri UK, Esri, TomTom, Garmin, Foursquare, GeoTechnologies, Inc, METI/NASA, USGS.
 Based upon the Ordnance Survey Map with the sanction of the controller of HM Stationery Office. Crown Copyright Reserved. © OS Licence No. 0100031673

Notes:	Status:
	Application Issue

Onshore Coordinate System
 Datum: OSGB 1936
 Spheroid: Airy 1830
 Projection: British National Grid
 Central Meridian: 2 W
 Vertical Reference: Newlyn



Outer Dowsing Offshore Wind 2.6 Crown Land Plans Onshore DCO Application

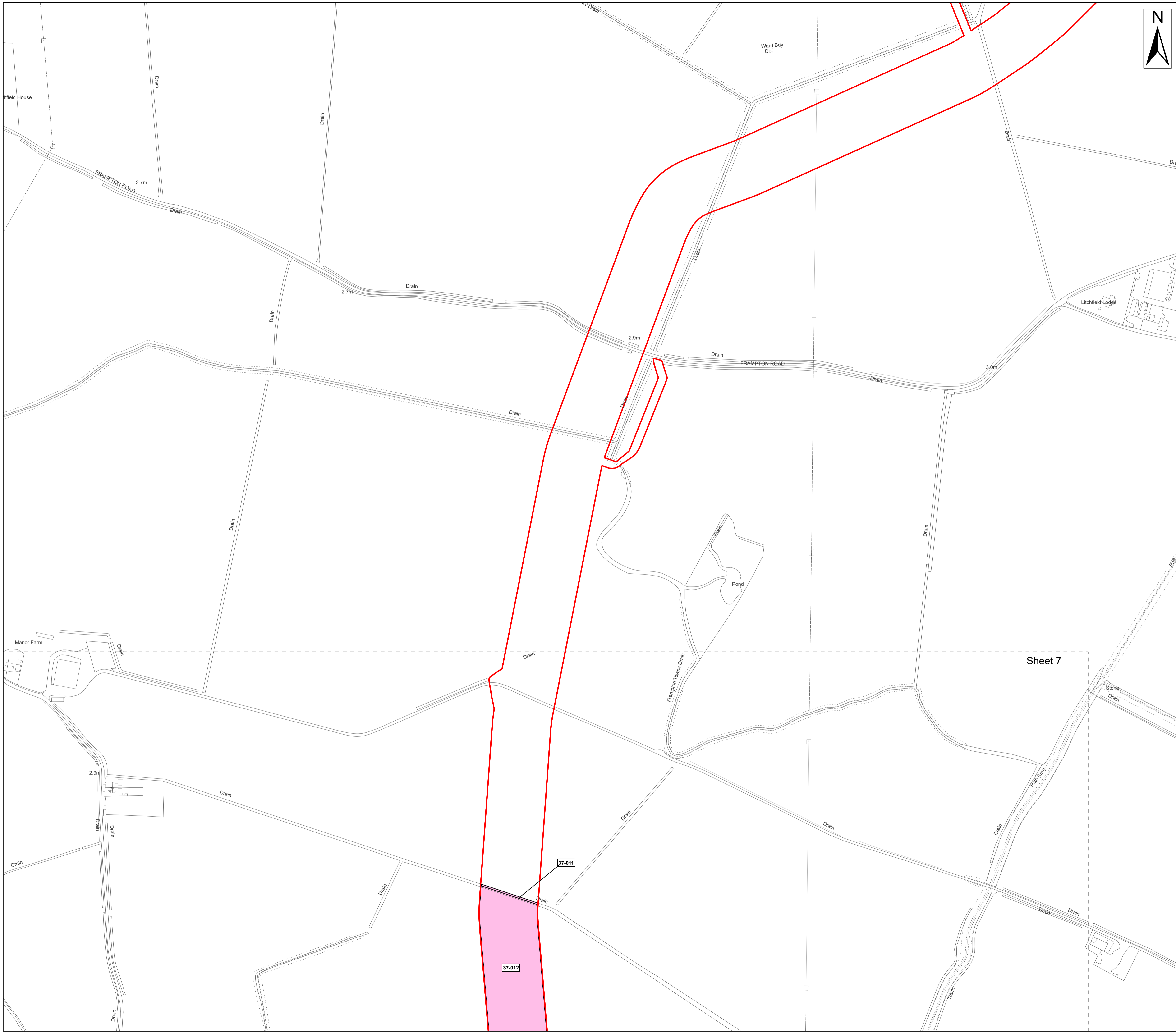
Drawing No: PP1-ODOW-DEV-CS-MAP-0006

Drawing: 5 of 11 Page Size: A1

Rev No:	Date	Description	Drawn	Checked	Approved
1.0	March 2024	DCO Application Version	RT	DM/ODOW	ODOW



This document may only be used for the purpose for which it was commissioned and in accordance with the terms of engagement for that commission. Unauthorised use of this document in any form whatsoever is prohibited.



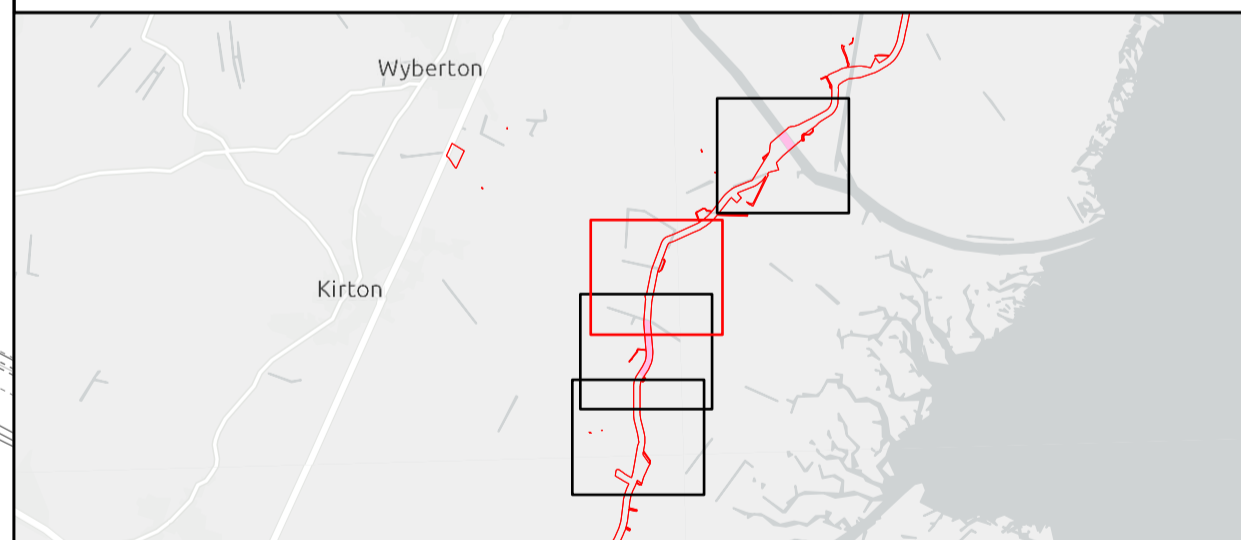
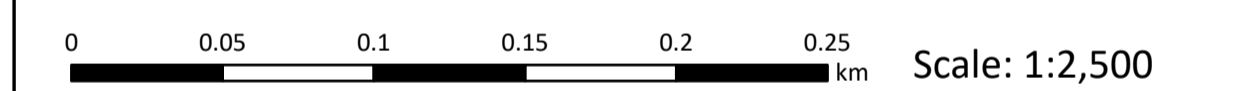
- Legend**
- Order Limits
 - The King's Most Excellent Majesty In Right Of His Crown

Source:
 Contains Esri Community Maps Contributors, Esri UK, Esri, TomTom, Garmin, Foursquare, GeoTechnologies, Inc, METI/NASA, USGS, Esri UK, Esri, TomTom, Garmin, Foursquare, GeoTechnologies, Inc, METI/NASA, USGS.
 Based upon the Ordnance Survey Map with the sanction of the controller of HM Stationery Office. Crown Copyright Reserved. © OS Licence No. 0100031673

Notes:

Status:
Application Issue

Onshore Coordinate System
 Datum: OSGB 1936
 Spheroid: Airy 1830
 Projection: British National Grid
 Central Meridian: 2 W
 Vertical Reference: Newlyn



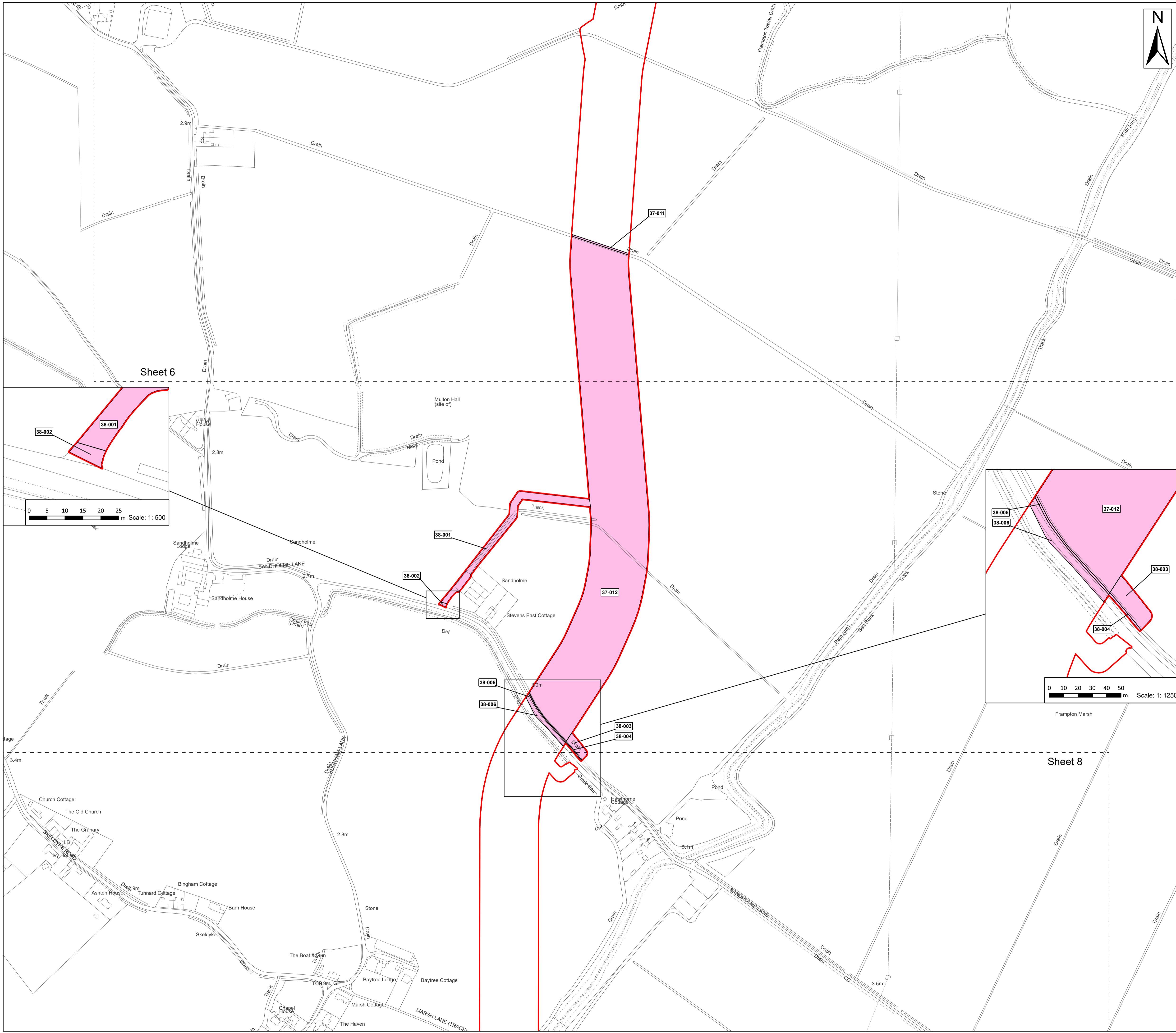
Outer Dowsing Offshore Wind 2.6 Crown Land Plans Onshore DCO Application

Drawing No: PP1-ODOW-DEV-CS-MAP-0006

Drawing: 6 of 11			Page Size: A1		
Rev No:	Date	Description	Drawn	Checked	Approved
1.0	March 2024	DCO Application Version	RT	DM/ODOW	ODOW

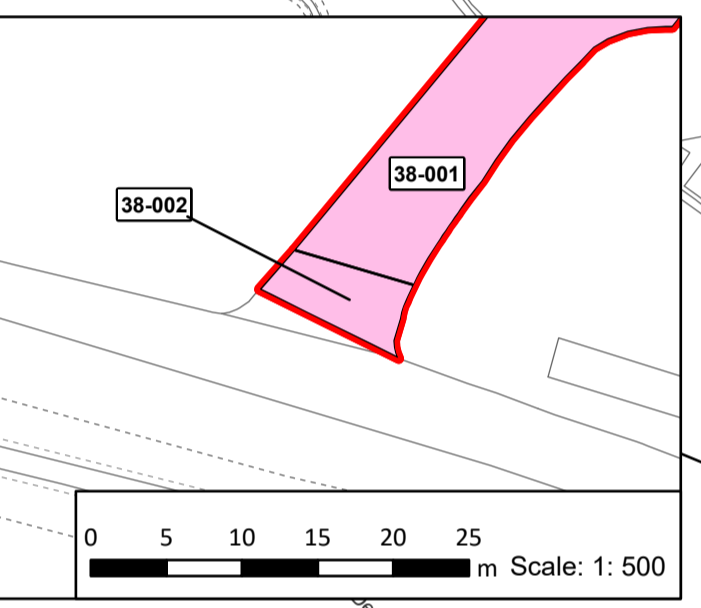


This document may only be used for the purpose for which it was commissioned and in accordance with the terms of engagement for that commission. Unauthorised use of this document in any form whatsoever is prohibited.



- Legend**
- Order Limits
 - The King's Most Excellent Majesty In Right Of His Crown

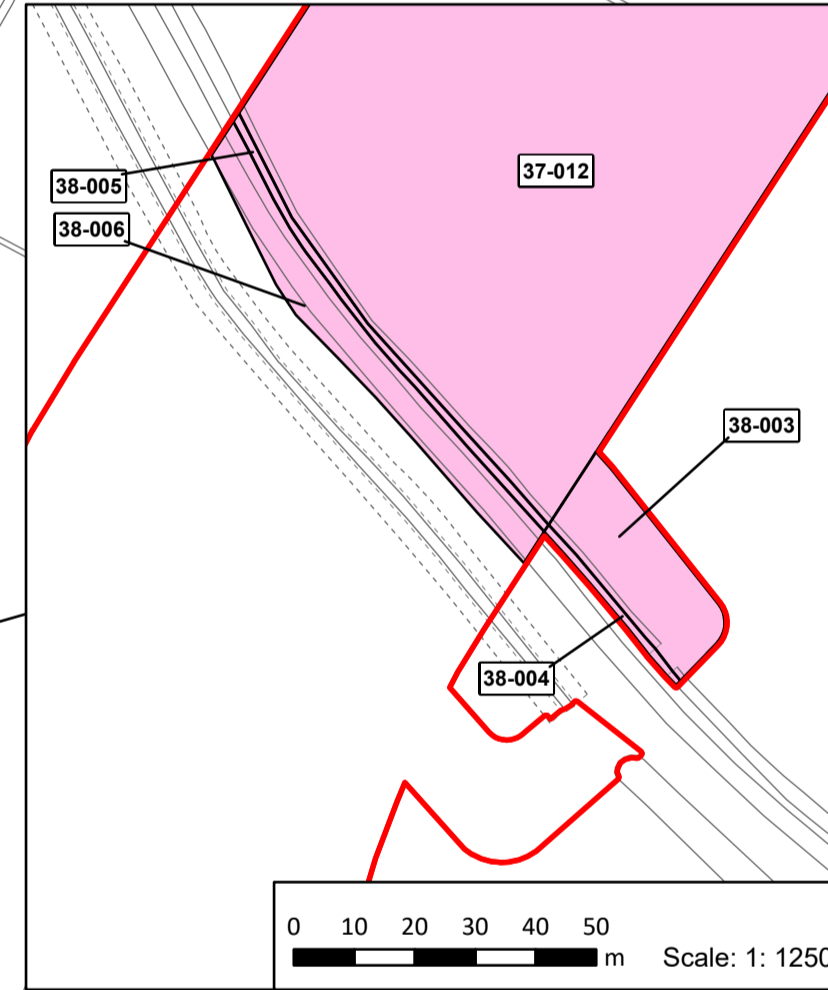
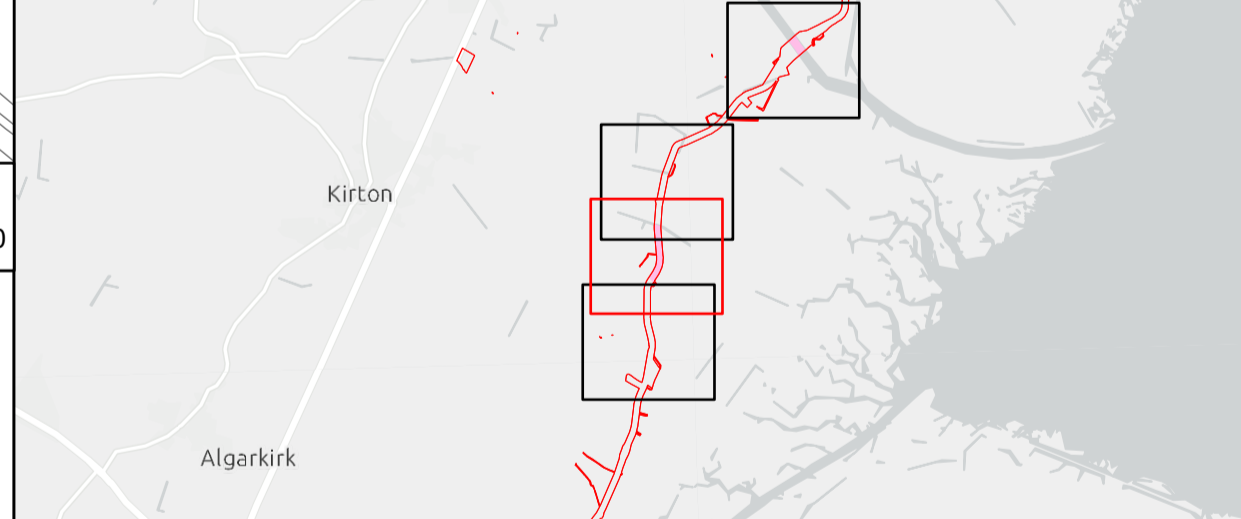
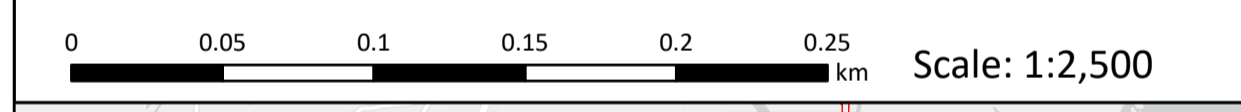
Source:
 Contains Esri Community Maps Contributors, Esri UK, Esri, TomTom, Garmin, Foursquare, GeoTechnologies, Inc, METI/NASA, USGS, Esri UK, Esri, TomTom, Garmin, Foursquare, GeoTechnologies, Inc, METI/NASA, USGS.
 Based upon the Ordnance Survey Map with the sanction of the controller of HM Stationery Office. Crown Copyright Reserved. © OS Licence No. 0100031673



Notes:

Status:
Application Issue

Onshore Coordinate System
 Datum: OSGB 1936
 Spheroid: Airy 1830
 Projection: British National Grid
 Central Meridian: 2 W
 Vertical Reference: Newlyn



Outer Dowsing Offshore Wind 2.6 Crown Land Plans Onshore DCO Application

Drawing No: PP1-ODOW-DEV-CS-MAP-0006

Drawing: 7 of 11 Page Size: A1

Rev No:	Date	Description	Drawn	Checked	Approved
1.0	March 2024	DCO Application Version	RT	DM/ODOW	ODOW



This document may only be used for the purpose for which it was commissioned and in accordance with the terms of engagement for that commission. Unauthorised use of this document in any form whatsoever is prohibited.



Legend
 Order Limits
 The King's Most Excellent Majesty In Right Of His Crown

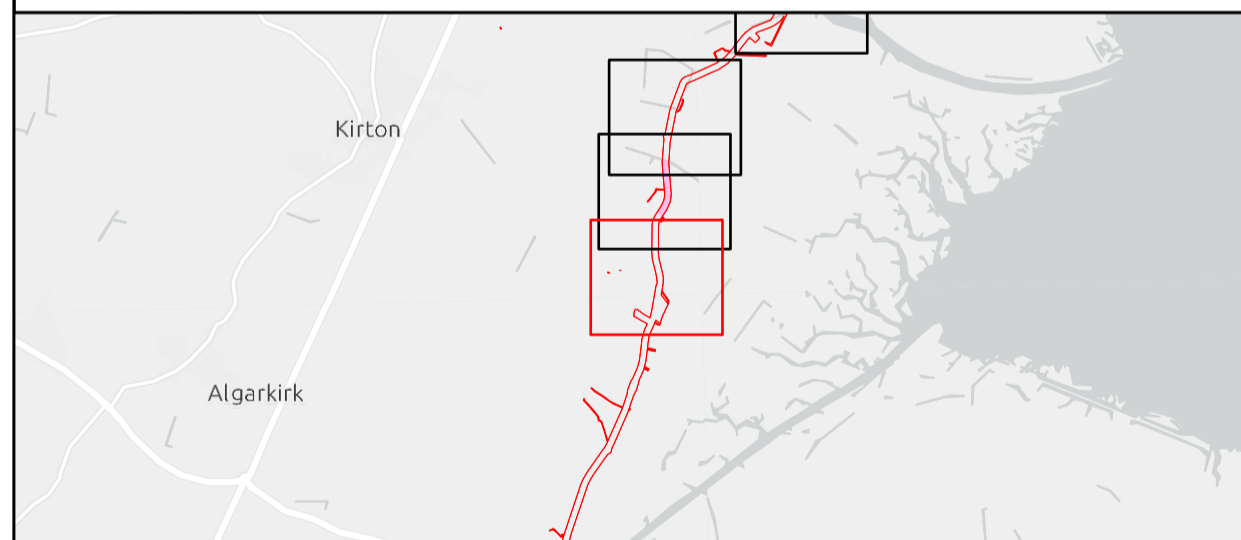
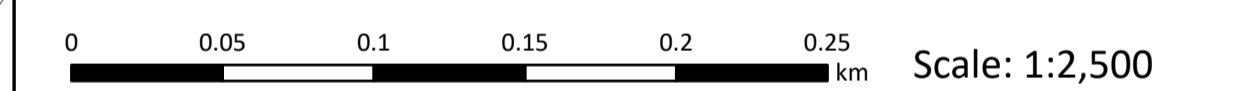
Sheet 7

Source:
 Contains Esri Community Maps Contributors, Esri UK, Esri, TomTom, Garmin, Foursquare, GeoTechnologies, Inc, METI/NASA, USGS, Esri UK, Esri, TomTom, Garmin, Foursquare, GeoTechnologies, Inc, METI/NASA, USGS.
 Based upon the Ordnance Survey Map with the sanction of the controller of HM Stationery Office. Crown Copyright Reserved. © OS Licence No. 0100031673

Notes:

Status:
Application Issue

Onshore Coordinate System
 Datum: OSGB 1936
 Spheroid: Airy 1830
 Projection: British National Grid
 Central Meridian: 2 W
 Vertical Reference: Newlyn



Outer Dowsing Offshore Wind 2.6 Crown Land Plans Onshore DCO Application

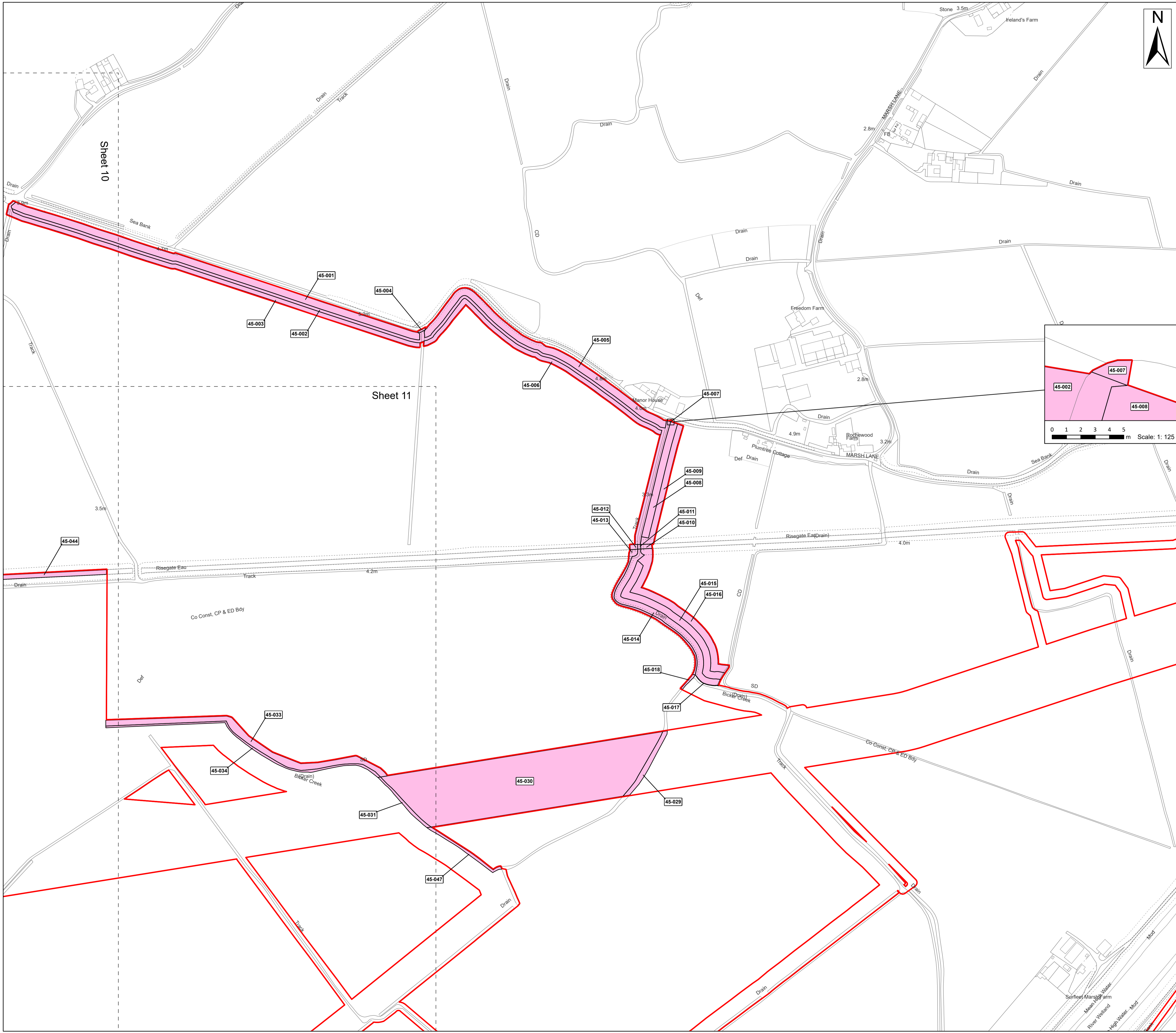
Drawing No: PP1-ODOW-DEV-CS-MAP-0006

Drawing: 8 of 11 Page Size: A1

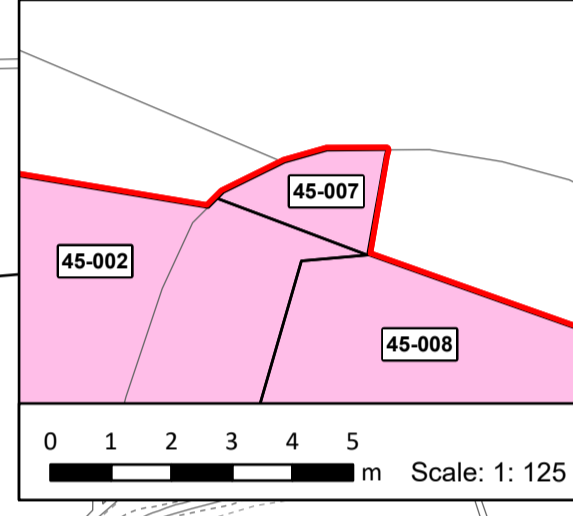
Rev No:	Date	Description	Drawn	Checked	Approved
1.0	March 2024	DCO Application Version	RT	DM/ODOW	ODOW



This document may only be used for the purpose for which it was commissioned and in accordance with the terms of engagement for that commission. Unauthorised use of this document in any form whatsoever is prohibited.



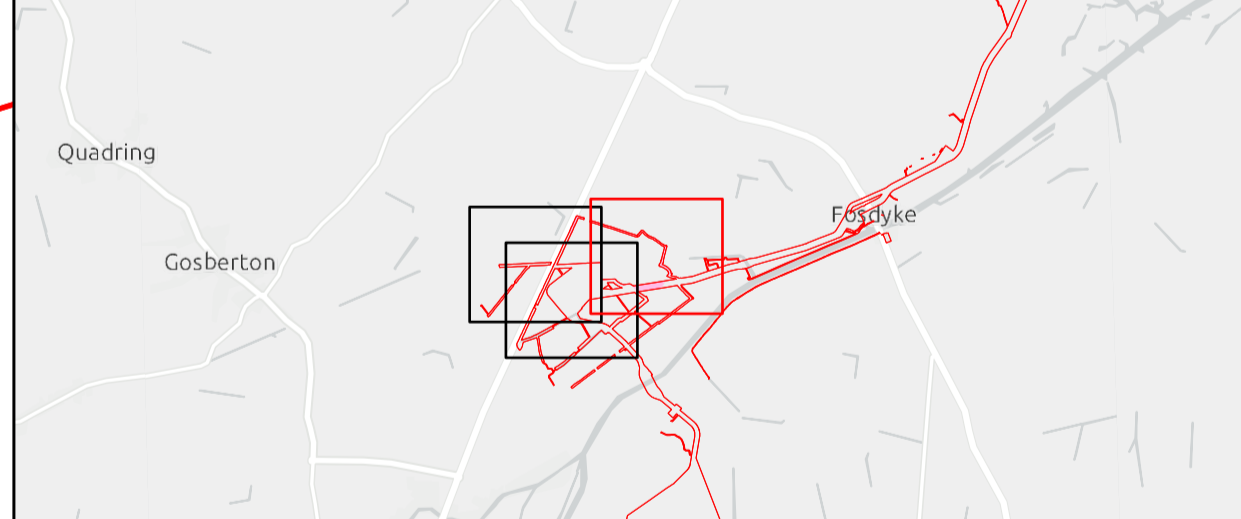
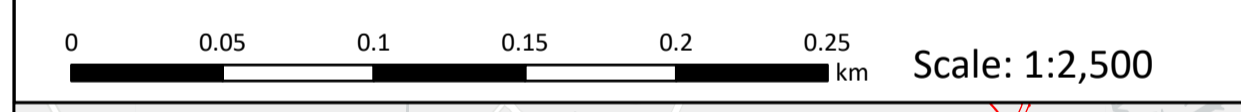
Legend
 Order Limits
 The King's Most Excellent Majesty In Right Of His Crown



Source:
 Contains Esri Community Maps Contributors, Esri UK, Esri, TomTom, Garmin, Foursquare, GeoTechnologies, Inc, METI/NASA, USGS, Esri UK, Esri, TomTom, Garmin, Foursquare, GeoTechnologies, Inc, METI/NASA, USGS.
 Based upon the Ordnance Survey Map with the sanction of the controller of HM Stationery Office. Crown Copyright Reserved. © OS Licence No. 0100031673

Notes: _____
 Application Issue _____

Onshore Coordinate System
 Datum: OSGB 1936
 Spheroid: Airy 1830
 Projection: British National Grid
 Central Meridian: 2 W
 Vertical Reference: Newlyn



Outer Dowsing Offshore Wind 2.6 Crown Land Plans Onshore DCO Application

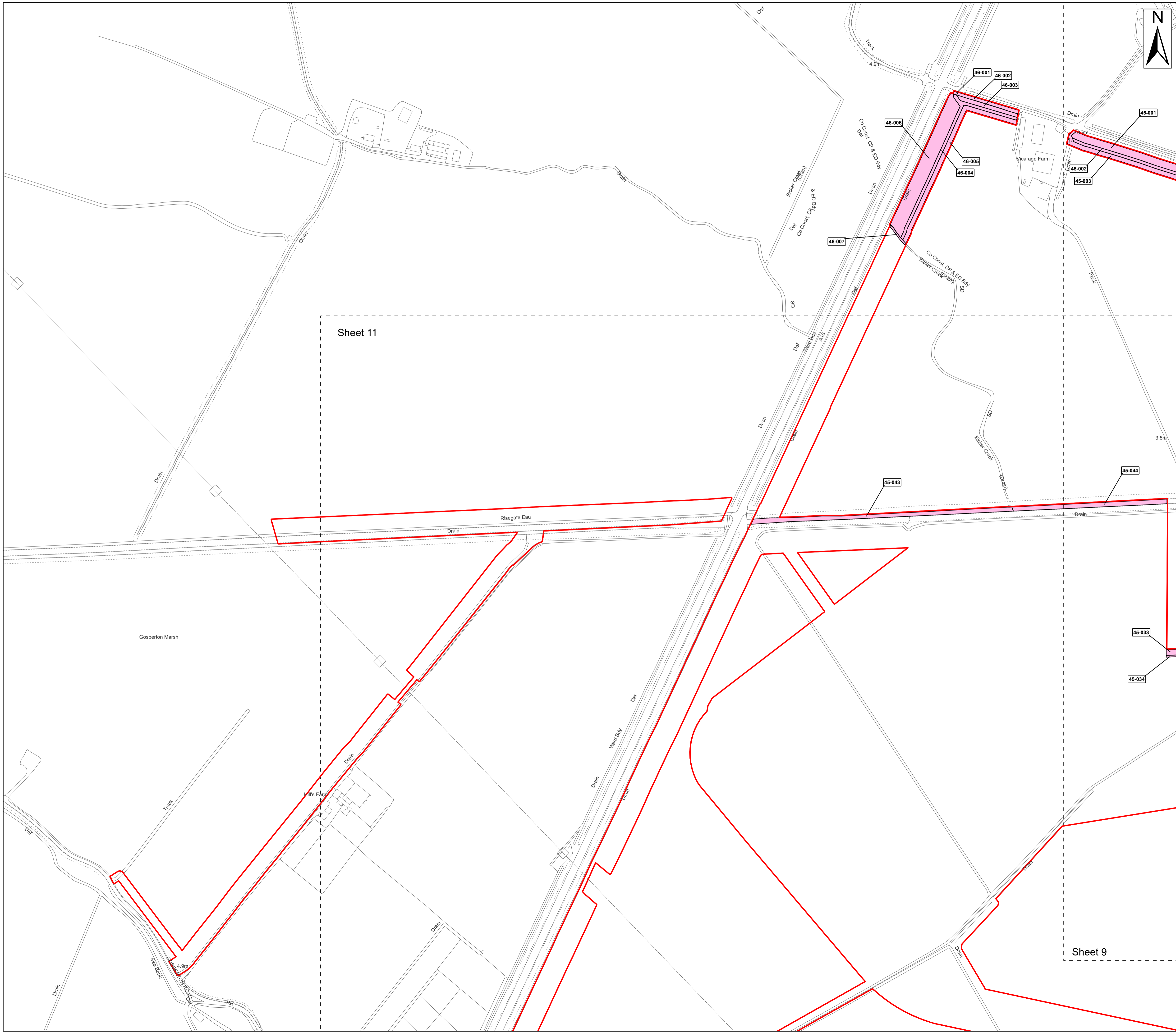
Drawing No: PP1-ODOW-DEV-CS-MAP-0006

Drawing: 9 of 11 Page Size: A1

Rev No:	Date	Description	Drawn	Checked	Approved
1.0	March 2024	DCO Application Version	RT	DM/ODOW	ODOW



This document may only be used for the purpose for which it was commissioned and in accordance with the terms of engagement for that commission. Unauthorised use of this document in any form whatsoever is prohibited.



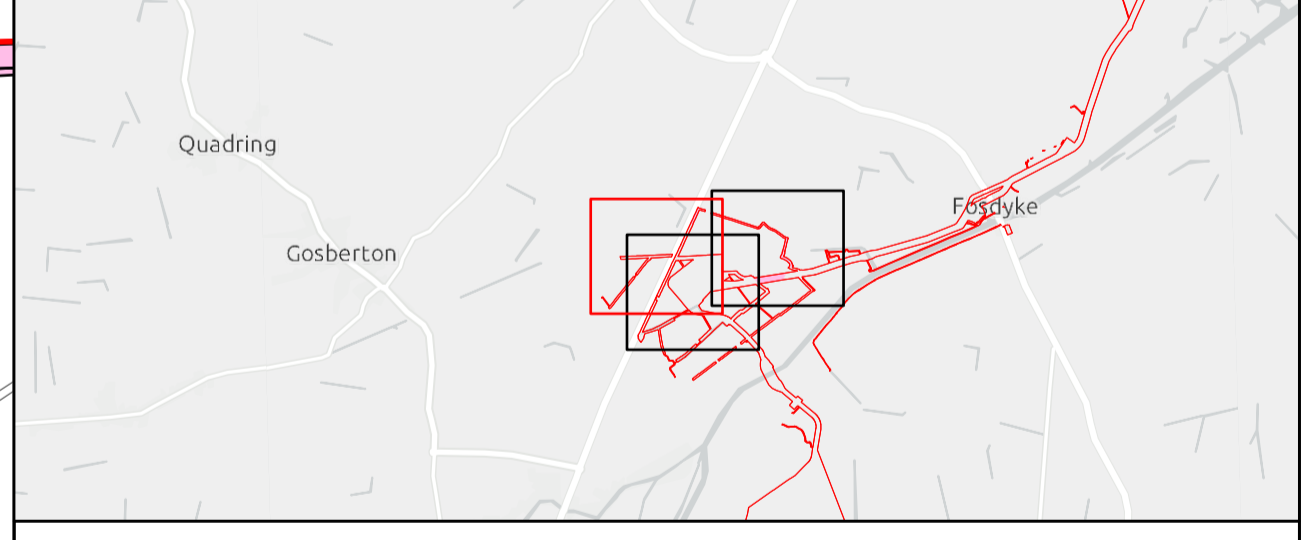
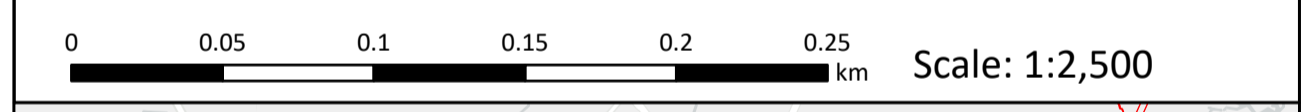
Legend

- Order Limits
- The King's Most Excellent Majesty In Right Of His Crown

Source:
 Contains Esri Community Maps Contributors, Esri UK, Esri, TomTom, Garmin, Foursquare, GeoTechnologies, Inc, METI/NASA, USGS, Esri UK, Esri, TomTom, Garmin, Foursquare, GeoTechnologies, Inc, METI/NASA, USGS.
 Based upon the Ordnance Survey Map with the sanction of the controller of HM Stationery Office. Crown Copyright Reserved. © OS Licence No. 0100031673

Notes:	Status:
	Application Issue

Onshore Coordinate System
 Datum: OSGB 1936
 Spheroid: Airy 1830
 Projection: British National Grid
 Central Meridian: 2 W
 Vertical Reference: Newlyn



Outer Dowsing Offshore Wind 2.6 Crown Land Plans Onshore DCO Application

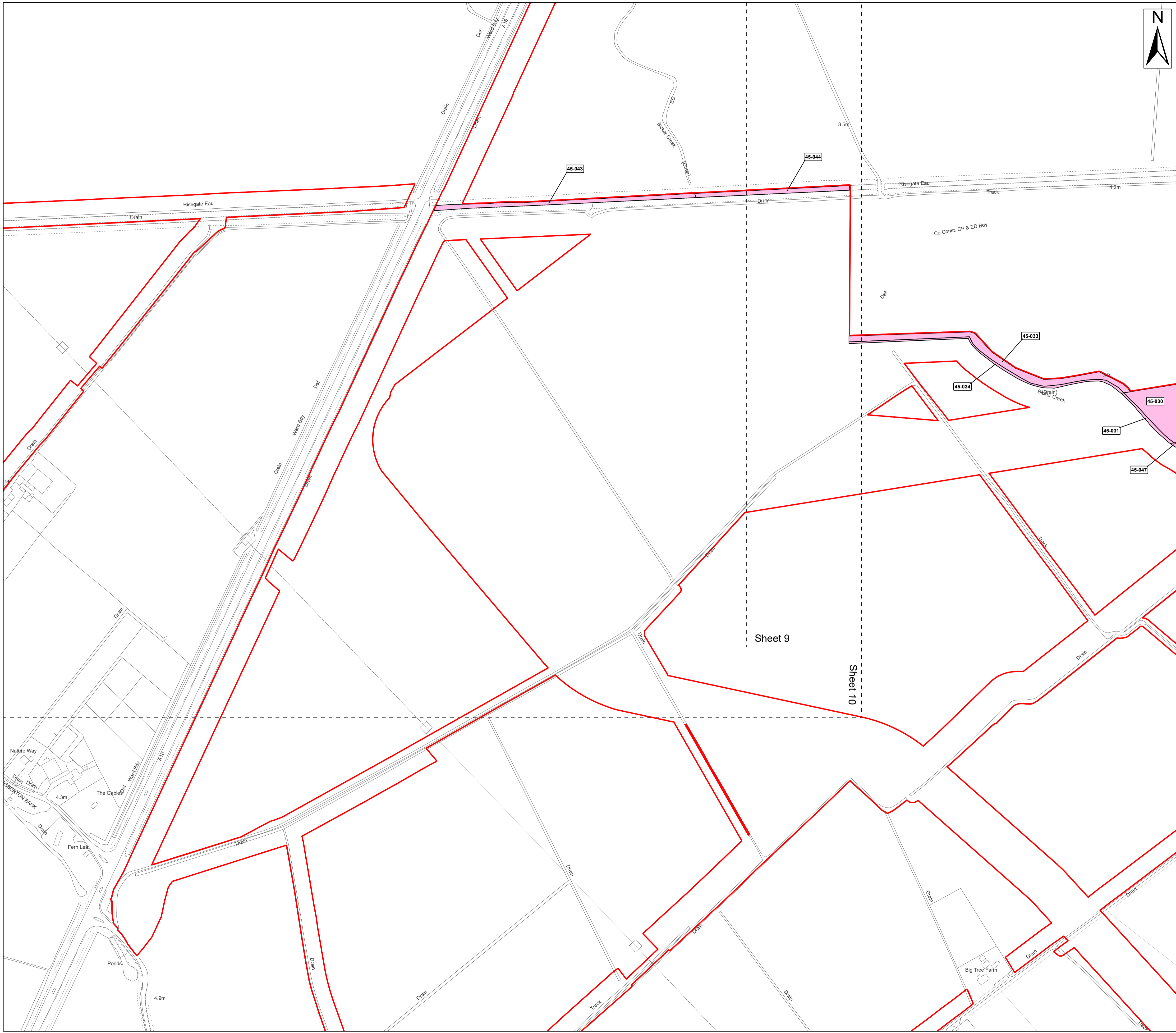
Drawing No: PP1-ODOW-DEV-CS-MAP-0006

Drawing: 10 of 11 Page Size: A1

Rev No:	Date	Description	Drawn	Checked	Approved
1.0	March 2024	DCO Application Version	RT	DM/ODOW	ODOW



This document may only be used for the purpose for which it was commissioned and in accordance with the terms of engagement for that commission. Unauthorised use of this document in any form whatsoever is prohibited.



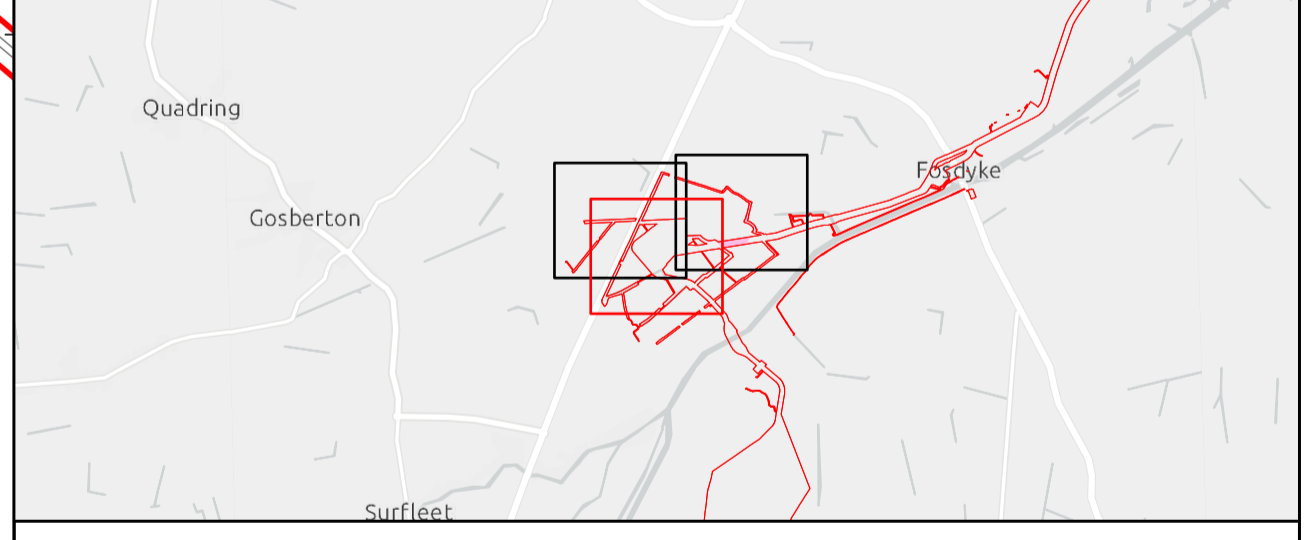
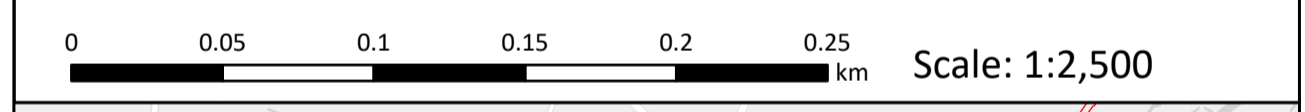
Legend
 Order Limits
 The King's Most Excellent Majesty In Right Of His Crown

Source:
 Contains Esri Community Maps Contributors, Esri UK, Esri, TomTom, Garmin, Foursquare, GeoTechnologies, Inc, METI/NASA, USGS, Esri UK, Esri, TomTom, Garmin, Foursquare, GeoTechnologies, Inc, METI/NASA, USGS.
 Based upon the Ordnance Survey Map with the sanction of the controller of HM Stationery Office. Crown Copyright Reserved. © OS Licence No. 0100031673

Notes:

Status:
Application Issue

Onshore Coordinate System
 Datum: OSGB 1936
 Spheroid: Airy 1830
 Projection: British National Grid
 Central Meridian: 2 W
 Vertical Reference: Newlyn



**Outer Dowsing Offshore Wind
 2.6 Crown Land Plans Onshore
 DCO Application**

Drawing No: PP1-ODOW-DEV-CS-MAP-0006

Drawing: 11 of 11 Page Size: A1

Rev No:	Date	Description	Drawn	Checked	Approved
1.0	March 2024	DCO Application Version	RT	DM/ODOW	ODOW



This document may only be used for the purpose for which it was commissioned and in accordance with the terms of engagement for that commission. Unauthorised use of this document in any form whatsoever is prohibited.